



A-Level

English Language & Literature

Contact one of specialist **A-Level**
Advisers on **0330 111 4006**



Secure your Future Success with our Fast-track Online, Accredited Courses

CloudLearn was the first UK distance learning company to offer a full suite of high school qualifications online allowing students to study on any device. Study on your phone, tablet or laptop with interactive and fully flexible courses that are designed to fit around your busy schedule. Get started in the Cloud today and achieve the qualification you need, when you need it.



Online Learning Specialists

We only offer online courses. We only provide High-School qualifications. We are the UK's only Specialist in online GCSE & A-Level courses.



Easy Flexible Payments

Spread the cost of your course with affordable, 0% interest, payment plans.



Your Learning Supported

Need help? No worries, we've got you covered. You have a dedicated tutor that you can contact 24/7. Our Student Service team are also available should you need any help.

A New Way of Learning

Here at CloudLearn we believe that learning should fit around your schedule, not the other way around. In today's world your smartphone can do almost everything, but have you ever considered you could study an entire A-Level course on this clever little device? Increasingly people are finding it more challenging to fit work commitments around their education, one often suffers as a result.

However, by delivering learning, assessments and support online, it is a lot easier for students to manage their workload as well as learn wherever and whenever they like. Studying with CloudLearn will better prepare you for the transition to independent learning commonly found at universities across the UK.

One of the main criticisms coming from universities and colleges is that students leaving school to pursue higher education often lack the independent learning skills needed to succeed within their chosen course. Our methods of learning address this concern by giving students more tools which they can use to study independently at their own pace.

Moving from a more teacher-directed environment to a learner-centric environment is what we are all about. Don't worry though, a dedicated and experienced tutor is assigned to you on enrolment. So should you come across any hurdles, your tutor will be able to help guide you and overcome them.

Is This the Same Qualification I Would get at School?

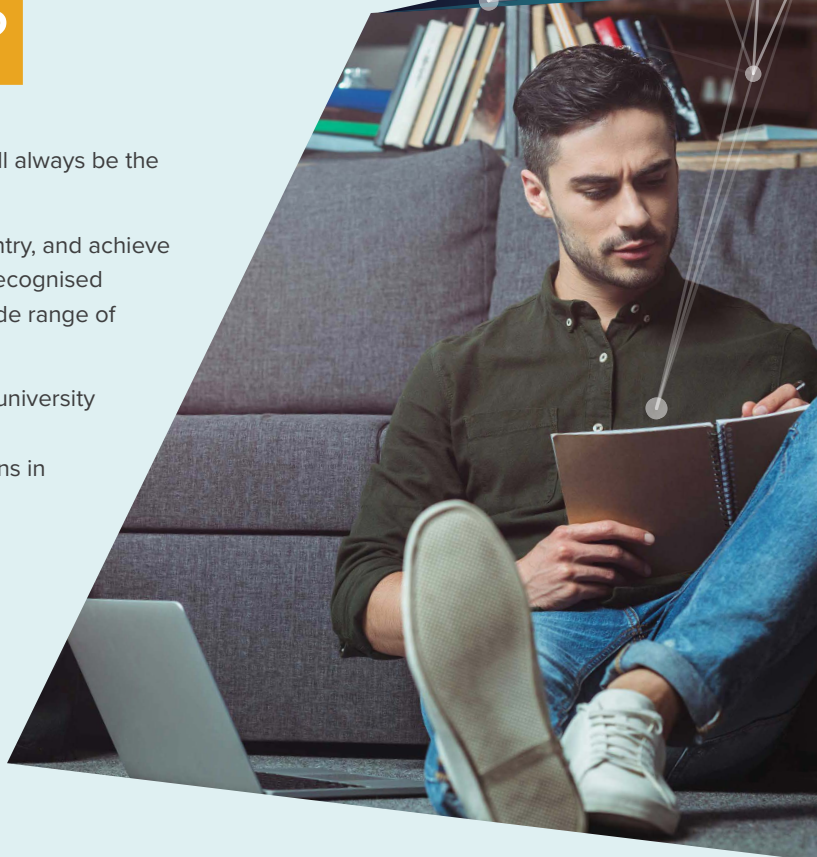
It sure is. Regardless of how or where you study, the qualification will always be the same.

You will sit the same exam as thousands of students across the country, and achieve the same qualification as everyone else. A-Level qualifications are recognised by the world's best universities and employers, giving students a wide range of options in their education and career.

Remember, A-Levels are used to determine if you are suitable for a university course. A-Levels are awarded by Edexcel, who are the UK's largest awarding organisation offering academic and vocational qualifications in schools, colleges and work places in the UK and abroad.

UK qualifications are globally recognised and taught in over 160 countries worldwide.

edexcel 



Fast-track Your Learning

Patience is a virtue, or is it? Sometimes you need a certain grade 'yesterday'. However, until they invent a time machine, Fast-tracking is your next best option. Depending on which course you choose to study, each will have a recommended amount of guided learning hours. This is the minimum amount of study time recommended for the course in preparation for the exam.

It is easier to visualise how Fast-tracking works with an example. Any A-Level course undertaken has a recommended 360 guided learning hours. Breaking down a 360 hour course into 12 weeks, you would need to be able to commit to 30 hours per week of studying. It is entirely up to you the amount of time you can commit to studying.

Do remember though that depending on the examination you will be sitting, you may be restricted to when you can sit your exam. A-Level examinations for example, are held once a year in June. It is recommended that you aim to book your examinations 6 months in advance. Additionally, we would advise that you contact a few exam centres and find out the best price.

All A-Level courses come with 24 month tutor support. If you do change your mind about Fast-tracking a course, you can take it at a slower pace and still use the tutor support should you ever need it. With this flexibility, in the unfortunate event you ever fall ill, have a change of circumstances or go on holiday we can put your studies on hold for as long as you like. Just let us know when you want to continue studying and we can reactivate your account!

Course Information

Exam Code **9ELO**

Our online A-Level English Language and Literature course aims to develop your ability to use linguistic and literary approaches in your reading and interpretation of texts.

Throughout your study of this course you will engage with a wide range of texts and learn to look for relationships between texts. You will also develop your language skills through independent study.

English Language and Literature is a course that builds strong analysis, writing and communication skills well as the ability to debate ideas, and is therefore an excellent addition to any combination of subjects. Journalism, law, publishing, PR and marketing are just a few of the many careers which depend on English.

Section	Marks	Course Overview - Skills
A	25	Apply concepts and methods from integrated linguistic and literary study as appropriate, using associated terminology and coherent written expression.
B	25	Analyse ways in which meanings are shaped in texts.
C	25	Demonstrate understanding of the significance and influence of the contexts in which texts are produced and received.
D	13	Explore connections across texts, informed by linguistic and literary concepts and methods.
E	12	Demonstrate expertise and creativity in the use of English to communicate in different ways.

Our online A-Level English Language and Literature course enables students to:

- ✔ Use integrated linguistic and literary approaches in their reading and interpretation of texts
- ✔ Engage creatively and independently with a wide range of spoken, written and multimodal texts, exploring the relationships between texts
- ✔ Undertake independent and sustained studies to develop their skills as producers and interpreters of language.

As you progress through the online A-Level English Language and Literature sections, you will encounter: lessons, activities, core reading and assessments.

Whilst there is no pre-requisite required in order to study a L3 qualification in the UK, it is still recommended that you have studied the subject at L2 (GCSE level), as this will generally contain underpinning knowledge.



Course Overview

The course is structured into bite-sized parts:

Component 1 - Voices in Speech and Writing

For this component, we will look at how voices are conveyed in texts. We will look at the Edexcel publication:

- ✔ *Voices in Speech and Writing: An Anthology*

and explore the way that the selected authors convey a sense of voice. We will then study a drama text. This will be:

- ✔ Tennessee Williams - *A Streetcar Named Desire*.

This component is assessed by a written exam, lasting 2 hours and 30 minutes. There will be two sections.

In **Section A**, you will answer a comparative essay question.

This question will ask you to compare one of the texts that you have studied as part of the anthology with an unseen extract selected from 20th or 21st century sources.

In **Section B**, you will answer one extract-based question on our chosen drama text: *All My Sons*. You will be allowed to take a clean (unmarked) copy of the text into the exam with you.

The total number of available marks for the paper is 50. These are divided evenly between the sections so that **Section A** is worth a maximum of 25 marks and **Section B** is also worth a maximum of 25 marks.

Component 1 is worth 40% of the total A-Level.

Component 2 - Varieties in Language and Literature

For Component 2, we will be studying a range of texts based around the theme of Encounters. We will practice reading non-fiction prose texts on this theme. We will then study two literary texts. These texts will be:

- ✔ Emily Bronte - *Wuthering Heights*
- ✔ E. M. Forster - *A Room with a View*

This component is assessed by a 2 hour 30 minute written exam.

In **Section A**, you will answer a essay question on an unseen extract on the theme of encounters. This section will be worth 20 marks.

In **Section B**, you will answer a comparative essay question on our studied texts.

You will be allowed to take clean (unmarked) copies of the texts into the exam with you. This section will be worth 30 marks.

Component 2 is worth 40% of the total A-Level.

Coursework - Investigating and Creating Texts

For the coursework component of A-Level Language & Literature, you will study one non-fiction text and one fiction text. These texts will be thematically linked.

You will then complete two pieces of original writing. One will be a piece of fiction writing and one will be a piece of creative non-fiction.

You will also complete a separate analytical commentary that reflects on the texts that you have studied and the pieces of original writing that you have produced.

The Coursework Component is worth 20% of the total A-Level.

For a full breakdown of content and assessment requirements, see the full specification document available for download on our website.

Studying in the Cloud

Cloud (Computing)

noun

A network of remote servers hosted on the Internet and used to store, manage, and process data in place of local servers or personal computers.

It's your learning, you decide

Cloud-based Learning allows you the flexibility of 21st century learning. You can access your course anywhere, on any device, when you need. Think of it as a 'Classroom in your Pocket'. This allows you to set the pace. Take your time or Fast-track, get the qualification when you need it.

Track your performance

Our interactive assessments allow you to keep an eye on your performance as you progress towards examination. You have ALL your formative assessments available 24/7 on any device, ensuring sufficient practice. This ensures you are fully prepared well in advance of the exam date.

Unlimited and dedicated A-Level support

Our academic support team are hand-picked specialists with years of experience in online learning so they have what it takes to motivate and support you towards the completion of your course. They also provide exam guidance benefiting from years of experience supporting students through examination, so you know you have the support you need from enrolment to graduation.

Sitting exams at your local school or college

We are not yet at the stage where we can assess from home (although we are continually pressuring awarding bodies to consider this). So for the time being you will sit your exam at a national test centre (a school, college or learning centre). Our dedicated Exam Information section on our website gives you a compressive breakdown of the entire process and highlights everything you will need to know including costs, venues and booking advice.

Learn

verb

Gain or acquire knowledge of or skill in (something) by study, experience, or being taught.

Supporting You Every Step of the Way

CloudPort is our VLE or *Virtual Learning Environment*. This is where you will:

- ✔ Access your course materials
- ✔ View course videos
- ✔ Complete interactive assessments
- ✔ Talk with other students
- ✔ Contact your tutor
- ✔ Submit Mock Exams
- ✔ Track your performance

Your course materials have been designed and written by a team of subject experts with years of experience in distance and online learning. The team map these course to the awarding body syllabus to ensure the content prepares you for the examination. We break the courses down into 'bite-size' sections to make your learning flexible and manageable.

Learning in the Cloud ensure you have the contact you need. With thousands of fellow students online you can engage in discussion (or not), you can post questions and host debates on course forums (or not), it's down to you to choose the style and format of study that fits you.

You are assigned a dedicated tutor on the day you enrol and they will stay by your side until the day you graduate. They will support you with any questions on course content or assessment, they will provide you with detailed feedback on your mock exams and offer academic support and guidance when you need it.

You also have the help of our Student Support team. They are office-based and are on-call should you have any administrative needs or require any non-academic support. They are available Monday to Friday 9am to 5pm and can be contacted on 0330 111 4006. They are very friendly and are tasked to help you, so don't hesitate to contact them should you have any questions.

Rest assured, we've got you covered :)

The content of the psychology A-Level course is amazing. I can understand the content as it is easy to follow as the text is not crowded and the language is easy to understand (unlike other textbooks). The textbook and online material that CloudLearn produce is of high quality. CloudLearn also offer a way to communicate with tutors and students through the CloudPort forums (which is just like the Student Room forums), and instant messaging. CloudLearn is the best distance learning organisation that you could find.

Emily Bradhurst, A-Level Psychology Student.

We Love Our Guaranteed Pass...

So should you. We are the only Online Learning Provider that offers a full money back guarantee.

Study to our recommendations and we guarantee your pass. Fail your exam and we will refund your course fees in full, subject to terms and conditions.

Affordable Payment Plans

We recognise that financing your own learning is expensive. This is why we are dedicated to making learning as affordable and accessible as possible.

Depending on your requirements, we have flexible options available for payment which include:

- ✔ Get started - with NO deposit
- ✔ 0% interest payment plans
- ✔ At least 30 days before first payment
- ✔ Stay in control with Flexible Payments*
- ✔ Manage your own account

All course fees are listed on the course page if you are looking to pay in full. Payment plan options are also detailed in the 'checkout' section of the website, simply click on the button: 'View Finance Options'.

Alternatively, give one of our friendly advisors a call who will talk you through the various options.

Exam Fees

We are committed to making students aware at the point of enrolment that their exam fees are **not** included in the cost of their course. These fees are payable directly to the exam centre with costs ranging from £80 and upwards per paper.

Different centres have different fees so make sure you contact a few centres to get an idea of an average cost. We affiliate with numerous centres across the UK who offer CloudLearn students preferential pricing. Information on this can be found on our Exam Information page on our website.

Exams fees will mount up, particularly if you are studying 2 or 3 A-Level subjects. We can offer payment plans on our courses including exam fees - making sure the total cost is as affordable as possible and that you are not surprised by any hidden costs.

* Flexible Payments allow you to make larger payments to settle balances sooner than scheduled.



Don't be Fooled - Demand a Trial

There are a lot of companies out there that claim to be experts in online learning. When in doubt - ask for a trial. We have offered free sample courses since the day we launched, so that students are always able to evaluate our platform, content and assessment prior to enrolling. You will always be able to find a link to our **free trial** on every page of our website. Why?... because we are confident that you will like it :)

Ask about Hidden Costs

Not all learning companies volunteer information about additional costs such as exam fees. We think it's important to understand ALL the costs before you embark on a course of study. A-Level exams start at around £470 and upwards depending on the subject and the centre you choose.

Remember that we have exam partners who provide discounted fees for CloudLearn students.

FAQ

We think we have detailed everything you need to know, but in case we haven't check out the FAQ page on our website, and remember if the question isn't answered there, let us know and we will get back to you. Your questions will help a new generation of online learners.

Get Your Boss to Pay

A lot of our students have learning funded by their employer. That's not a problem, provide us with your employers details and we will invoice them directly.

Employers benefit from your continued professional development (CPD), why not ask your line manager today if we can help with your upskilling needs.

New Linear A-Levels

How do the old and new A-level systems compare?

Under the old system being phased out, AS-levels were studied in Year 12, with exams taken in May-June that were worth 50% of your overall A-level qualification.

Under the new system being introduced, all A-level exams will take place at the end of Year 13, with no marks from AS-levels (if you take these) contributing to the overall final grade.

Across the board, there will also be less coursework and fewer practical assessments under the new system (in Wales, practicals will still count in biology, chemistry and physics A-level) - making that exam revision all the more important. Grades will continue to be awarded on an A*-E scale.

START STUDYING
A-LEVEL

180 hrs

180 hrs

STUDY 360 HOURS

STUDY 180
HOURS

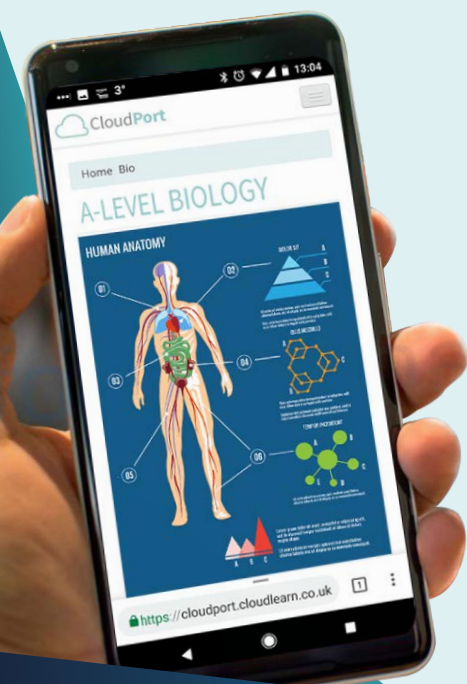
UNITS 1 + 2
AS EXAM

AS
CERTIFICATE

UNITS 1 + 2 + 3
A-LEVEL EXAM

A-LEVEL
CERTIFICATE

The AS remains a standalone qualification but can no longer be used as 50% of the full A-Level.



Student Services

We pride ourselves on ensuring your learning journey is as smooth and stress-free as possible. So, don't forget we are here to help. Our Student Services team are always on hand to help guide you on:

- ✔ Exam information
- ✔ Predicted grades for UCAS
- ✔ Student confirmation letters
- ✔ General admin
- ✔ Technical support
- ✔ Finance queries
- ✔ Fast-track scheduling
- ✔ Employer funding

Predicted Grades

Students looking to submit UCAS applications can request predicted grades based on your Tutor Marked Assessment (TMA) grades. In order to receive a predicted grade you will need to submit ALL of your TMAs for marking, the average of which, is your 'Predicted Grade'.



Preparing World-class Students

As one of the most recognised and respected secondary qualifications in the world, A-Levels inspire the minds of world class students while preparing them for university.

Developed by global subject specialists, they are reviewed on a regular basis and are written to rigorous global standards.



CloudLearn Gold Standard Exam Service

Take Your Exams in a CloudLearn Exam Centre

Remove the Headache of Having to Find a Centre - Use One of Ours.

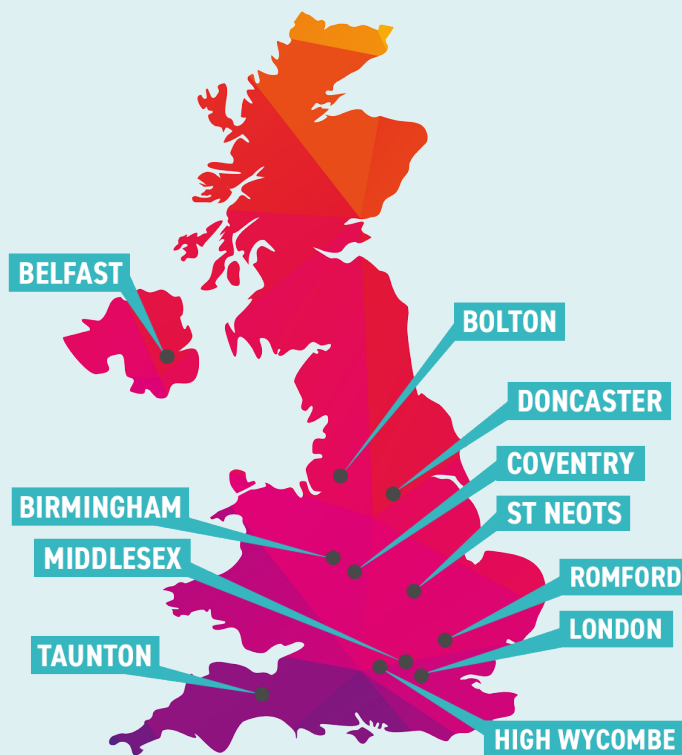
There are thousands of exam centres in the UK, but not all of them accept private candidates. In fact for some subjects that require coursework or practicals, finding a centre as a private candidate can prove tricky. That is why we have partnered with a network of centres in the UK.

Channeling thousands of students through examination gives us some buying power. We use this leverage to get CloudLearn students preferential pricing for exam fees. Taking your exam at one of our affiliated centres could save you hundreds of pounds, not to mention the hassle in locating a centre in your local area.

Take the stress out of exam time. Bundle the cost of your exams when you enrol and spread the cost using one of our payment plans.

If you want us to arrange your exam you will need to give us at least 6 months notice. We can only guarantee prices at our Belfast, Bolton, Birmingham, Coventry, Doncaster, High Wycombe, London, Middlesex, Romford, St Neots and Taunton centres. Other centres are available but exam fees will vary.

Written exam papers are available in our Belfast, Birmingham, Bolton, Coventry, Doncaster, High Wycombe, London, Romford, St Neots and Taunton exam centres. Science practicals are available in our Bolton, Coventry, London, Middlesex and Taunton labs.



Start your journey today



www.cloudlearn.co.uk

0330 111 4006